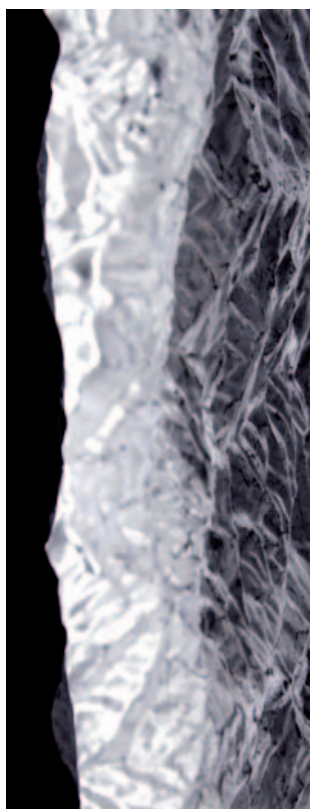
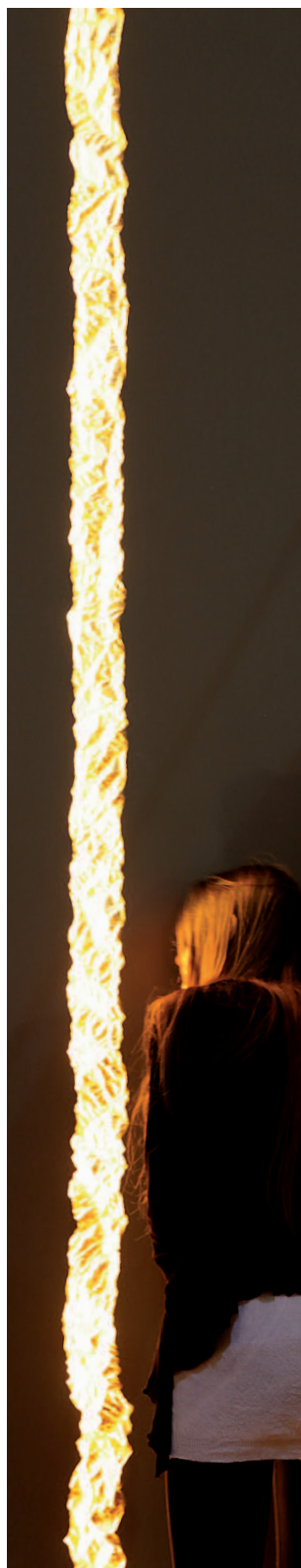


“ Rupture ” / wall lamp that can be fit



Derived from the Hommage table presented at Design Miami / Basel in June 2010, this luminous crack – imagined for and developed by Flos - tears the wall in two following what appears like a poetical thread. Horizontal or vertical, the installation blends into the wall creating either a warm golden scar or rather cold silvery crack.

Indented into the wall with lightness, the system appears to come out of nowhere as the light source remains invisible.

■ **Edition**
Unlimited

■ **Producer**
FLOS

■ **Exhibition**
EUROLUCE 2011, Milano

■ **Materials**
technical ecofriendly plaster, aluminium,
gold or silver finishing

■ **Source of light**
LEDs 2300 K for gold version
LEDs 5000 K for silver version

■ **Features**
vertical or horizontal

■ **Lead time**
1 week

■ **Dimensions**
L 27.6" (65 cm) / I 10.6" (27 cm) / h to measure

■ **Weight**
Around 6 kg / m

www.atelierthierrydreyfus.fr

Atelier Thierry Dreyfus